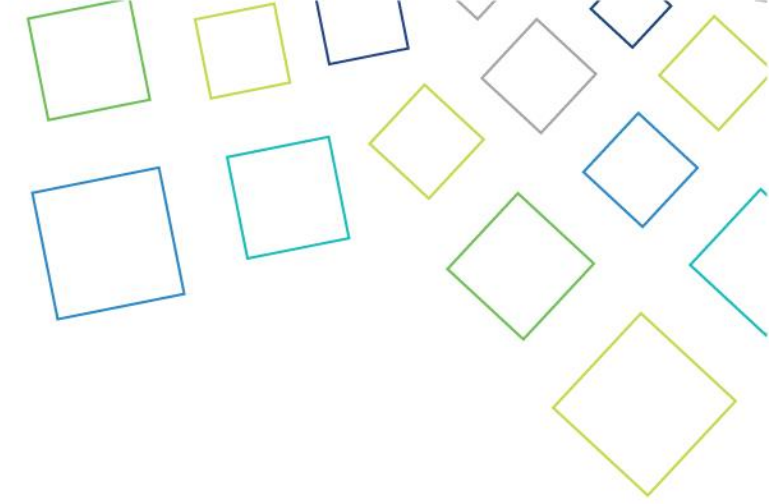


# Outbreak Notification system



# Outline

A cluster of various colored squares (green, yellow, blue, teal) in the top right corner.

Operation  
Teams or  
Unit

Outbreak  
Notification  
system

Classification  
Matrix

A cluster of teal-colored squares in the bottom left corner.

# Operation Teams



# Operational Unit

- Operation teams are critical to the success of data reporting methods, analyzing and management intervention.
- They are responsible for the day-to-day following of the entered data and running of the platform ( outbreak system ).
- They are also the first line of defence for incidents and engage with users during these stressful moments.



# Outbreak Notification system & classification matrix



# Outbreak Notification system

- The outbreak notification is an Online system in which (the regional health directorate coordinator and cluster ( transformation coordinators), and the operating team in GDIPC are notified if there has been an outbreak in the facility.



# Outbreak Notification system

---

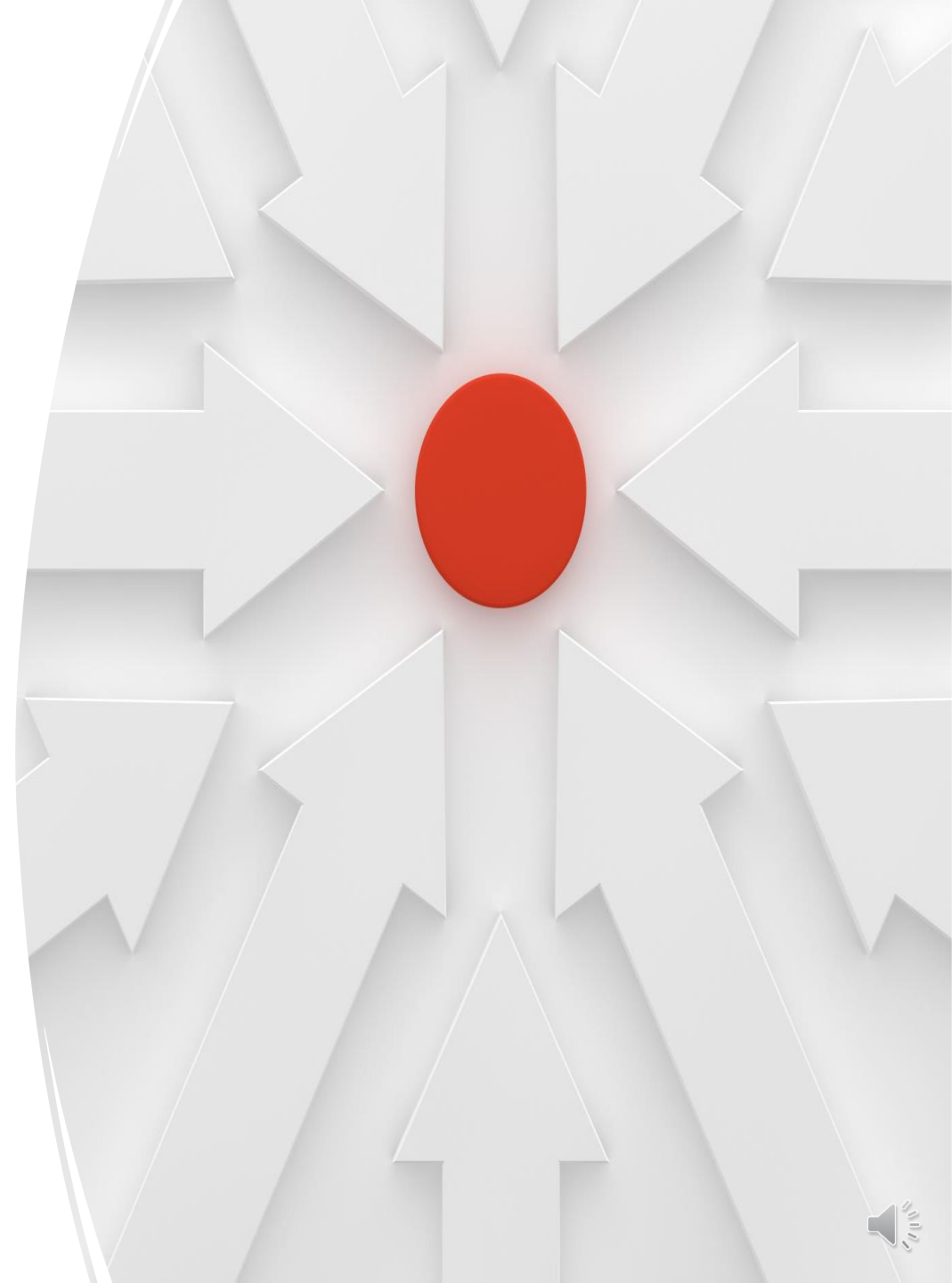
- The Online Outbreak Notification report is a streamlined submission via the use of GDIPC form site that provides a user-oriented data submission process.



# Outbreak Notification system

---

- The goal of this system is to notify the individual to allow them to take action and follow up the prevention process.

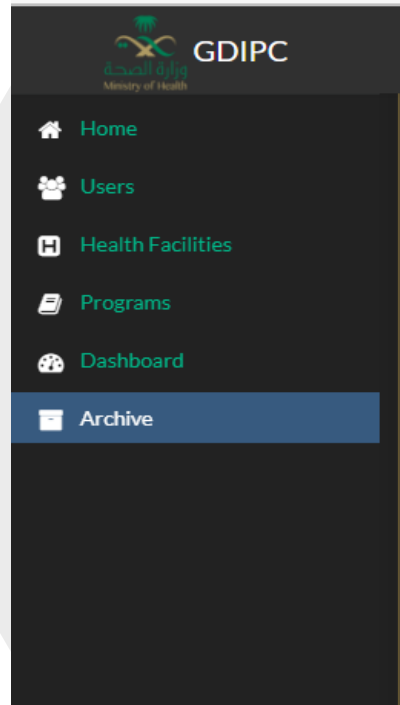




# Notification system

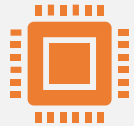
- User manual

<https://gdipc.sa/>



# Notification process

---



This process has been updated from email to a secure online platform to enhance the health facility user experience and to streamline internal processing.



Outbreak notification from health units allows the outbreak GDIPC team to prepare for incoming notification, gauge potential operational impact and assess opportunities for further assistance. The contact information provided may also help streamline reporting of results



# Notification Process



The outbreak level is determined using an Outbreak Classification Matrix



Once an outbreak is confirmed or suspected, the hospital outbreak coordinator is required to fill all required an online outbreak process starting with



**Notification form in the platform within the first (48) hours of an outbreak onset.**



**The hospitals must fill up the forms within the first (72) hours and update the investigation form immediately when new cases or deaths occurs,; otherwise, data will be updated once weekly**



# Data Variables to be Collected

## Demographic Data

Patient Name

ID Type

Choose

National ID#/Iqama #

Gender

Choose

Date of Birth

Patient/HCWs

Choose

Exposed to Positive Case

Choose

Epi-link

Choose

Unit

General ward

CAI/HAI

Choose

## Epidemiological Data

Diagnosis

MDROs

Choose

Risk Factors



## Clinical Data

Date of Sign and Symptoms



Date of first Result



## Device associated

Yes or No

## Treatment Management

Antiviral

Vaccination

Antibiotics

TPN

IV Medications

IV Fluid

## Status

Outcome

Date of Outcomes





# Classification Matrix



# Introduction to the Classification Matrix

Classification Matrix is an explanation for the rapid response team intervention level. The microorganism in the matrix is classified according to the aggressivity and risk assessment for the previous annual report from GDIPC.



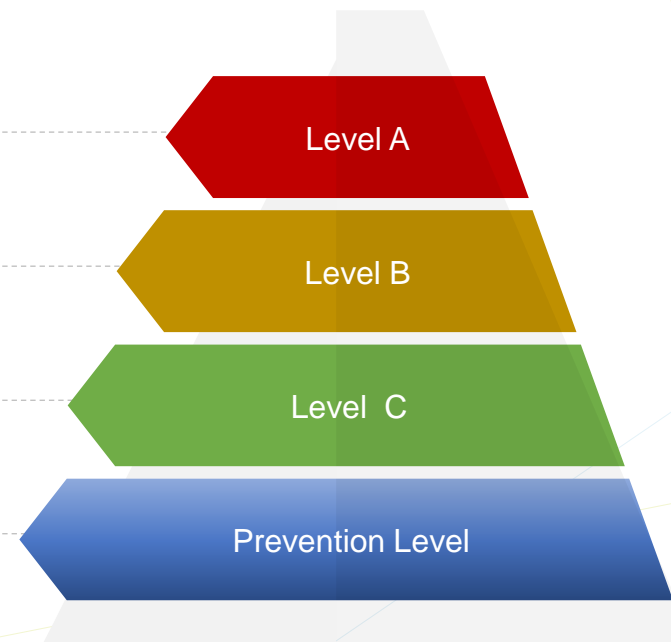
# Outbreak Classification Matrix

It increases the number of cases that need a high intervention from the command to contain the outbreak ( GDPIC)

A moderate number of the cases need regional intervention level.

A Present of Hospital Acquired infection (HAIs)  
Cases that need internal intervention ( Hospital level )

The initial step must be Implemented to inhibit the spread of infection ( precautions measure).





# Outbreak Classification Matrix- Class A

## Intervention

- Prepare the corrective action plan with Regional Health Directorate (RHD).
- Assess the outbreak facility assessment done by RHD.
- Maintain close communication with the cluster and hospital.
- GDIPC will be involved when the above three points have not achieved their outcome.

## Responsibility

Regional responsibility.

GDIPC's responsibility, if needed



# Outbreak Classification Matrix- Class A

		Pathogen	No new confirmed cases
	1	Acinetobacter <u>baumanni</u> complex	8 Cases & Above
	2	Acinetobacter <u>baumannii</u>	
	3	Acinetobacter <u>baumannii</u> MDR	
	4	Acinetobacter <u>baumannii</u> PDR	
	5	Acinetobacter <u>baumannii</u> XDR	
	6	<u>Burkholderia</u> cepacian	
	7	Klebsiella <u>oxytoca</u>	
		Klebsiella Pneumonia (CRKP)	
		Klebsiella Pneumonia ( <u>esbls</u> )	
	8	Klebsiella spp.	
	9	<u>Morganella</u> morganii	
		MRSA	
		Mycobacterium <u>Bovis</u>	
		Mycobacterium tuberculosis	
		Proteus mirabilis	



## Outbreak Classification Matrix- Class B



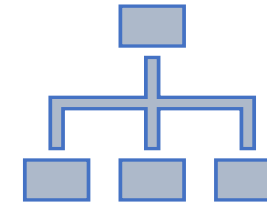
### Intervention:

Prepare the corrective action plan with Regional Health Directorate (RHD).

Assess the outbreak facility assessment done by RHD.

Maintain close communication with RHD.

GDIPC will involve when the above three points have not achieved their outcome.



### Responsibility

Regional responsibility.

Health cluster



# Outbreak Classification Matrix- Class B

40	Candida albicans	5 – 7 Cases
41	Candida Species	
42	Candida glabrata	
43	Candida <u>parapsilosis</u>	
44	Candida Tropicalis	
45	Candida Auris	
46	Candida <u>haemulonii</u>	
47	Aspergillus Species	3 - 4 Cases
48	Hepatitis A virus (HAV)	5 - 7 Cases
49	Hepatitis B virus (HBV)	
50	Hepatitis C virus (HCV)	3 - 4 Cases
51	Measles	5 - 7 Cases
52	Chickenpox	
53	Influenza or Influenza-Like Illness (ILI)	5 - 7 Cases
54	COVID- 19	6-10 Cases
55	MERS- <u>Cov</u>	3-5 Cases



## Outbreak Classification Matrix- Class C

### Intervention:

- Fill up the forms through the GDIPC platform- (notification form within 48 hours, Complete OMAP form the outbreak investigation form (outbreak line list, and contact tracing for patients and HCWs within (72 hours).
- Follow up the OMAP with cluster
- RHD coordinator will visit the facility as needed or as recommended by GDIPC
- Note: GDIPC will be involved when it is necessary

### Responsibility

- Hospitals' responsibility
- pertaining hospitals are under the responsibility of the cluster, itself.



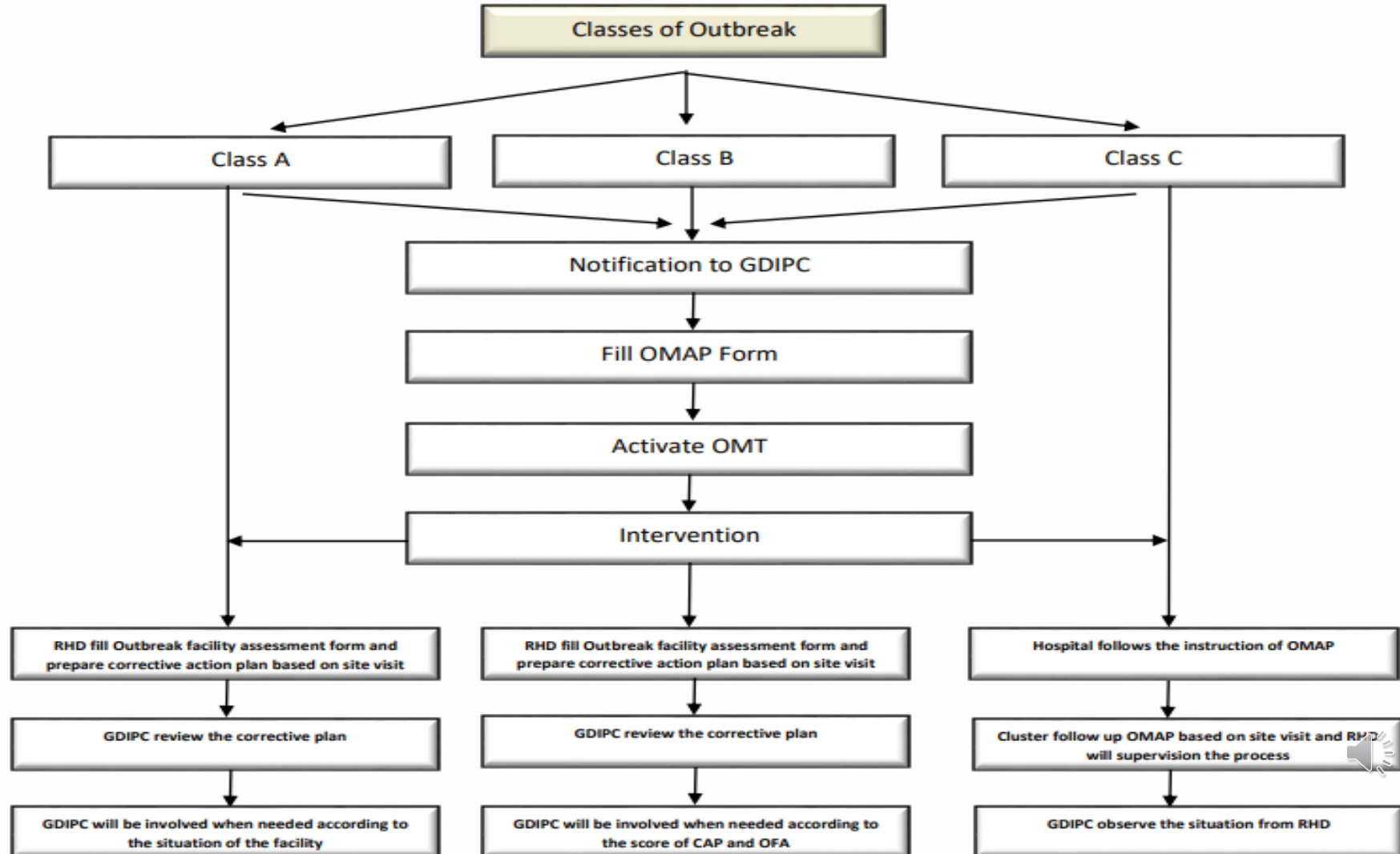
Exogenous		No new
37	Clostridium Botulinum	2 - 4 Cases
38	<u>VRE</u>	
39	Legionella pneumophila	1 - 2 Cases
40	Candida Auris	2- 4 Cases
41	Candida Species	
42	Candida glabrata	
43	Candida <u>parapsilosis</u>	
44	Candida Tropicalis	
45	Candida albicans	
46	Candida <u>haemulonii</u>	1 - 2 Case
47	Aspergillus Species	
48	Hepatitis A virus (HAV)	2 - 4 Cases
49	Hepatitis B virus (HBV)	1 - 2 Cases
	Hepatitis C virus (HCV)	
	les	2 - 4 Cases
	like Illness	2 - 4 Cases

# Outbreak Classification Matrix- Class C





**GDIPC:** General Directorate of Infection Prevention and Control  
**OMAP:** Outbreak Management Action Plan  
**OMT:** Outbreak Management Team  
**RHD:** Regional Health Directorate  
**HC:** Health Cluster



Thank you

